

# 221

VOLUME

FEBRUARY 2008

# Immunological Reviews

EDITOR-IN-CHIEF GARY KORETZKY • PHILADELPHIA • USA  
DEPUTY EDITOR JOHN MONROE • PHILADELPHIA • USA

## EDITORIAL BOARD

RAFI AHMED

JOHN CAMBIER

MAX COOPER

PETER CRESSWELL

ALAIN FISCHER

CYNTHIA GUIDOS

WENDY HAVRAN

MARC JENKINS

PAUL W. KINCADE

JEAN-PIERRE KINET

TOMOHIRO KUROSAKI

LEWIS L. LANIER

ANJANA RAO

MICHAEL RETH

SHIMON SAKAGUCHI

LEOPOLDO SANTOS-ARGUMEDO

DAVID G. SCHATZ

BURKHART SCHRAVEN

YOJI SHIMIZU

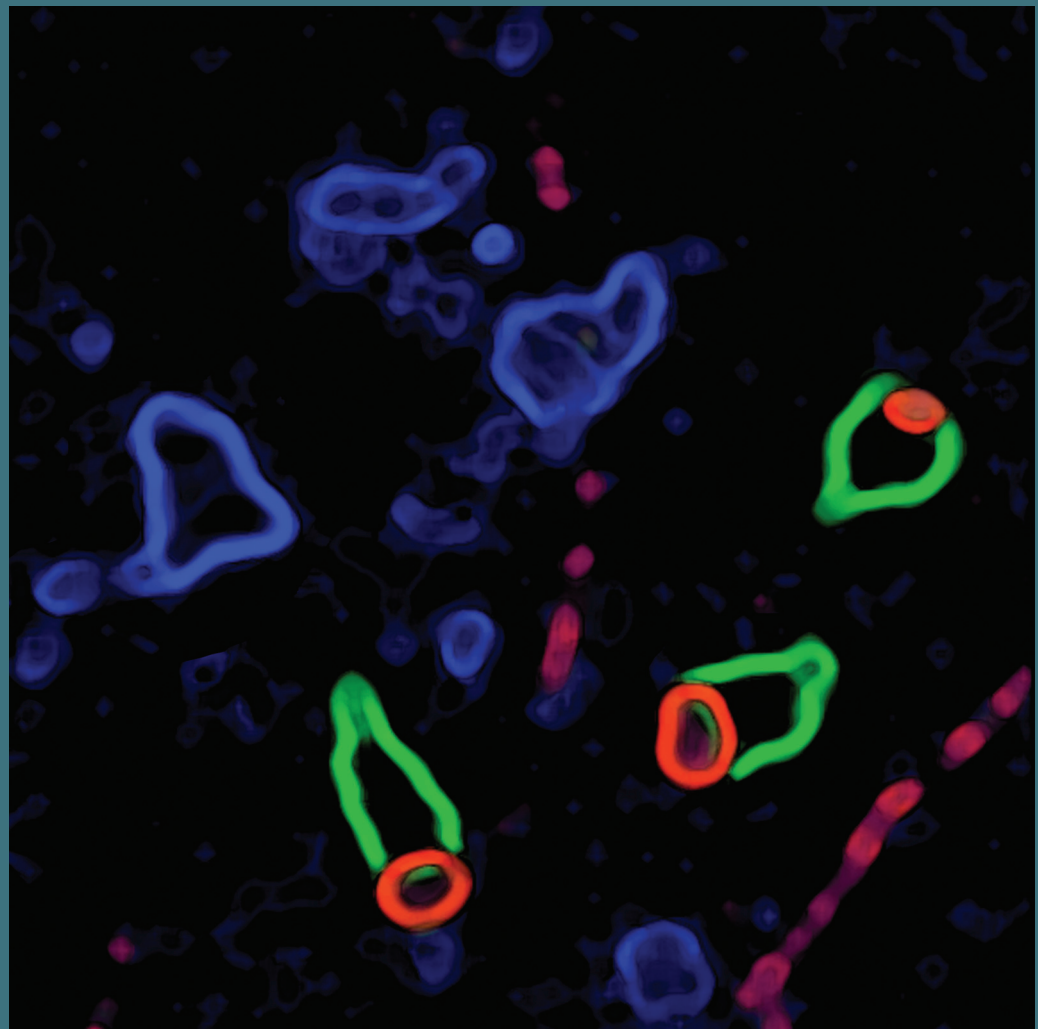
ALFRED SINGER

ANDRÉ VEILLETTE

ARTHUR WEISS

## FOUNDING EDITOR

GÖRAN MÖLLER



## Imaging the Immune System

The existing paradigms for how immune cells interact with each other and their environment have come largely from static images obtained through histochemistry. As this volume illustrates, an exciting era in immunology is now emerging where the immune response and much of its complexity can be visualized in real time and within the confines of secondary lymphoid tissues *in vivo*.

As the reviews in this issue describe, such studies are altering our perceptions of how, when, where, and for how long immune cells participate in innate and adaptive responses. Our authors show how the advances in and applications of new technologies facilitating imaging of the immune system are destroying old paradigms and writing new ones.